

**Scorpion Automotive Ltd**

Scorpion House, Drumhead Road,  
Chorley North Business Park,  
Chorley

Lancashire PR6 7DE

Tel: +44 (0) 1257 249928 • Fax: +44 (0) 1257 249938

info@scorpionauto.com • www.scorpionauto.com

**Declaration of Conformity**

Reference: DTSGS01

**We** Scorpion Automotive Ltd,

**Of** Drumhead Road, Chorley North Business Park, Chorley, Lancashire, PR6 7DE, UK,

**Declare that the below products;**

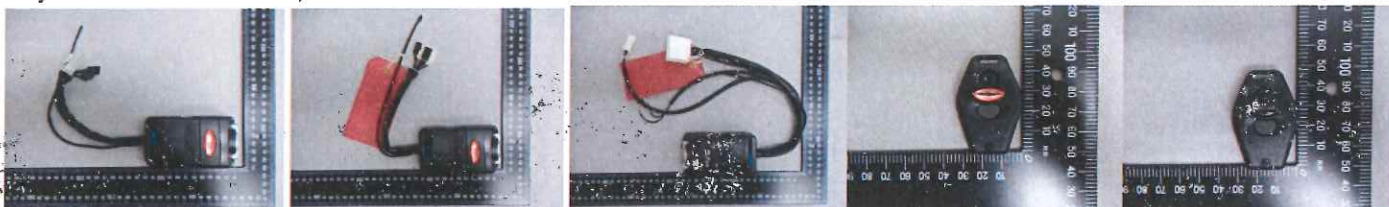
Model: Datatool S4 C1 Red Model Number: 02000140

Model: Datatool S4 C221 Green Model Number: 02000141

Model: Triumph Cat 1 Model Number: 02000240

Model: Datatool S4 Remote Model Number: 02007010

Model: Triumph S4 Remote Model number: 02007012

**Objects of this declaration;****To which this declaration relates, are in conformity with the following Type Approval Regulations and Technical Specifications;**

Directive 2014/53/EU (RED) ETSI EN 301 489-1 v2.2.0 : 2017-03

Directive 2014/53/EU (RED) ETSI EN 301 489-3 v2.1.1 : 2017-03

Directive 2014/53/EU (RED) ETSI EN 300 220-2 v3.1.1: 2017

EN 55032 : 2015+AC : 2016-07

EN 61000-4-2 : 2009, EN 61000-4-3 : 2006+A1 : 2008+A2 : 2010

EN 61000-4-4 : 2012, EN 61000-4-6 : 2014, ISO 7637-2 : 2004

IEC 60950-1 2005 (Second Edition) + Am 1 : 2009 + Am 2 : 2013

UN ECE Regulation 10, Revision 5 - Electromagnetic compatibility

EN 62479: 2010

**And we have examined the technical basis for this declaration which is based on the test reports and certificates issued by;**

SGS Taiwan Ltd, Electronics & Communication Laboratory, No.134,Wu Kung Road, New Taipei Industrial Park, Wuku District, New Taipei City, Taiwan 24803 &

SGS United Kingdom Ltd, Unit 12, Bowburn South Industrial Estate, Bowburn, Durham, DH6 5AD

**Supporting documentation relevant to this declaration has been compiled under the reference above and will be made available upon request.**

**Signed by and on behalf of Scorpion Automotive Ltd:**

M. Nolan

**Date:**

06/03/2019

**Authority:**

Michael Nolan - Quality Manager

**ATTENTION!**

**The attention of the specifier, purchaser, installer or user is drawn to special measures and limitations to use which must be observed when the product is taken into service to maintain compliance with the above directives. Details of these special measures and limitations are available upon request.**

