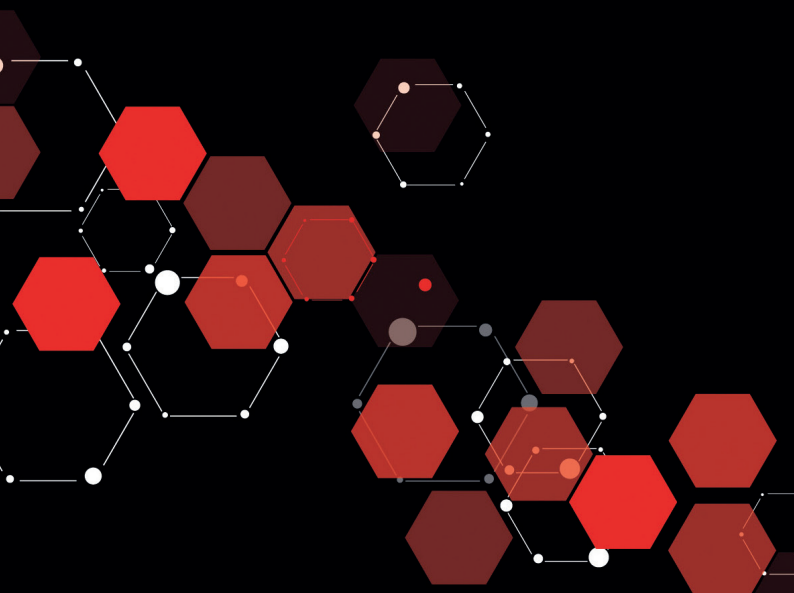


**DATATOOL<sup>®</sup>**

**DNA**

SECURITY MARKING SYSTEM



[www.datatool.com](http://www.datatool.com)

**WHAT IS INCLUDED:**

1 Tube Of Datadots

Protected by  
**DATATOOL DNA**  
SAD0001359  
[www.datatool.co.uk](http://www.datatool.co.uk)

1 Tamper Evident Warning



1 New Keeper Sticker



1 Domed Resin Warning Label

**For Emergencies ONLY: 01257 240 945**

**For General Enquiries: 01257 249 928**

Thank you for purchasing the Datatool DNA Security Marketing system, please read these instructions fully before protecting your vehicle. After fitting, please allow 2 hours before using your vehicle so the UV solutions have enough time to dry.

### **How does Datatool DNA protect my vehicle?**

Professional thieves like to steal vehicles that are difficult to trace and therefore easy to dispose of. Datatool DNA makes your vehicle much easier to identify and trace, thereby reducing its desirability to thieves.

### **How does the system work?**

The UV ID numbers will be registered on our secure database together with your personal details.

Enquiries made to the Datatool database by the Police will provide the information to identify the vehicle or individual parts of your vehicle using special scanners able to read the unique transponders.

### **Registration**

The details of your vehicle are to be entered via our registration process and these will be stored on our secure accredited database.

Please visit [www.dna.datatool.com](http://www.dna.datatool.com) you can complete your registration online.

### **What happens if my vehicle is stolen?**

Notify the Police immediately. Then, contact Datatool quoting your vehicle reg or VIN and we will flag a warning on our database. We will also ask for the crime reference number that you have obtained from the Police so we can work with them to recover your vehicle.

## How to install

Each tube contains hundreds of Datadots; each dot within the tube carries the same unique ID information. The adhesive carrying the Datadots also contains a unique forensic chemical DNA. This gives the vehicle its own unique DNA.

Datadots are used to protect as many parts of the vehicle as possible; even if components are stripped from the original vehicle the Datadots and DNA can provide conclusive identification.

Datadots are visibly read using special magnifiers that are already used by the Police and other official organisations.

Important: The Datadots are suspended in a clear glue which may not dry to a perfect factory type 'flat' paint finish, therefore, do not apply Datadots to overt areas where they may impair vision or look unsightly such as the external bodywork or fairing. Ensure surfaces are always clean and dry prior to application.

## Instructions

Shake the tube well before use.

Using the brush supplied, paint the dots and the forensic DNA onto the components or areas to be marked making sure that the dots and forensic DNA adhesive is applied sparingly.

Examples of typical items that can be marked with Datadots and forensic DNA include:

Underside and rear of, seats, wheels, trims, fairings, dash board, chassis tubes, carburettor and injector bodies/manifolds, alternator/wiring, electrical components, hydraulic/energy casings, BUT NOT hot areas such as the exhaust or cylinder heads.

Apply the Datadots and forensic DNA where they are least likely to be affected by dirt, rain, spray road grit or regular washing.



### Warning Label

This provides a visual deterrent to potential thieves and should be applied to a highly visible area. This can be applied ONCE and cannot be removed without damage, please position carefully.

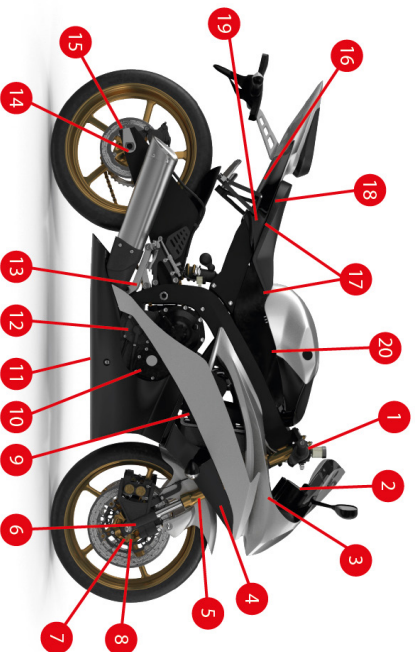
### Tamper Evident Warning Label

Fitting this label aids both the Police and future owners to contact Datatool. This should be placed under the seat area (NOT on the seat) or in a non prominent location. This can only be applied ONCE so please take care.

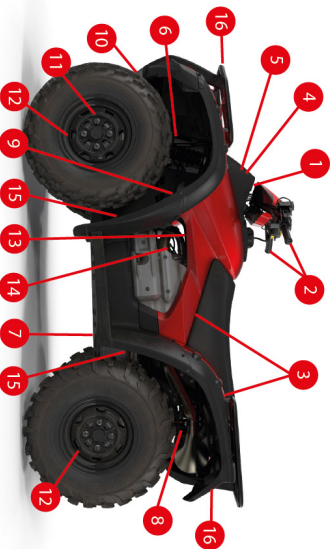
A light grey rounded rectangular label with a thin black border. The text is arranged vertically: 'Protected by' in black, 'DATATOOLDNA' in large bold black letters, 'SAD0001359' in large black letters, and 'www.datatool.co.uk' in small black text at the bottom.

Protected by  
**DATATOOLDNA**  
SAD0001359  
www.datatool.co.uk

## Application Points

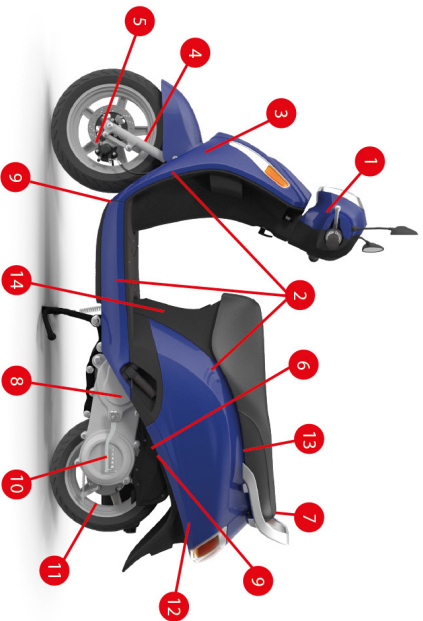


- 1) Inside Steering Stem
- 2) Under Instrument Cluster
- 3) VIN Plate (Across)
- 4) Fairings (Inside)
- 5) Fork Yolk (Bottom)
- 6) Front Fork (Rear Both Sides)
- 7) Front Rim (Hub)
- 8) Front Axle (Inside)
- 9) Engine Cylinder Head
- 10) Engine Crankcase (R/H Side)
- 11) Engine Crankcase (L/H Side)
- 12) Frame (Inside Where Possible)
- 13) Swing-Arm (Inside)
- 14) Rear Axle (Inside)
- 15) Rear Rim (Hub)
- 16) Tail Fairing (Inside)
- 17) Seat (Underside)
- 18) Wiring Loom
- 19) CDI/ECU
- 20) Fuel Tank (Underside)



- 1) Steering Head (Under Cover)
- 2) Inside Handlebars
- 3) Seat (Underside)
- 4) Inside Wiring Loom
- 5) CDI Unit
- 6) Front Differential
- 7) Rear Swing Arm (Inside Holes)
- 8) Rear Differential
- 9) Crankcase
- 10) Inside Front Arms
- 11) Front Hubs
- 12) Inside 4 Wheel Rims
- 13) Cylinder Head
- 14) Cylinder
- 15) Spray Over VIN
- 16) Warning Decals

## Scooter Application Points



- 1) Under Instrument Cluster
- 2) Fairings (Inside)
- 3) Fork Yoke
- 4) Front Fork (Rear Both Sides)
- 5) Front Rim (Hub)
- 6) Engine Cylinder Head
- 7) Engine Crankcase (R/H Side)
- 8) Engine Crankcase (L/H Side)
- 9) Frame (Inside Where Possible)
- 10) Swing-Arm (Inside)
- 11) Rear Rim (Hub))
- 12) Tail Fairing (Inside)
- 13) Seat (Underside)
- 14) Wiring Loom





- 1) Inside Steering Stem
- 2) Under Instrument Cluster
- 3) VIN Plate (Across)
- 4) Fairings (Inside)
- 5) Fork Yolk (Bottom)
- 6) Front Fork (Rear Both Sides)
- 7) Front Rim (Hub)
- 8) Front Axle (Inside)
- 9) Engine Cylinder Head
- 10) Engine Crankcase (R/H Side)
- 11) Engine Crankcase (L/H Side)
- 12) Frame (Inside Where Possible)
- 13) wing-Arm (Inside)
- 14) Rear Axle (Inside)
- 15) Rear Rim (Hub)
- 16) Tail Fairing (Inside)
- 17) Seat (Underside)
- 18) Wiring Loom
- 19) CDI/ECU
- 20) Fuel Tank (Underside)

**Once installed, immediately complete the online registration form at <https://datatool.com/dna-quick-start/>**

**IF WE DON'T RECEIVE THIS INFORMATION, YOUR VEHICLE & DETAILS WON'T BE REGISTERED.**

**Please inform Datatool immediately if your vehicle is stolen and if it is later recovered.**

### **What happens if I sell my vehicle?**

Datatool DNA is transferable and the new keeper can have their name and address added to our records for free. They will need to quote the vehicle reg or VIN provided and provide proof of ownership. & DETAILS WON'T BE REGISTERED.

**Please inform Datatool immediately if your vehicle is stolen and if it is later recovered.**

[www.datatool.com](http://www.datatool.com) | [sales@datatool.com](mailto:sales@datatool.com) | 01257 249 928

Datatool is a brand of Scorpion Automotive. Scorpion House,  
Drumhead Road, Chorley, Lancashire, PR6 7DE

**SCORPION**<sup>®</sup>  
AUTOMOTIVE

**DATATOOL**<sup>®</sup>

CE UK  
NI

UK  
CA